

VAA UPDATE

CHIEF OF MAINTENANCE & OPERATIONS

 Kevin Gregg

October 13, 2021

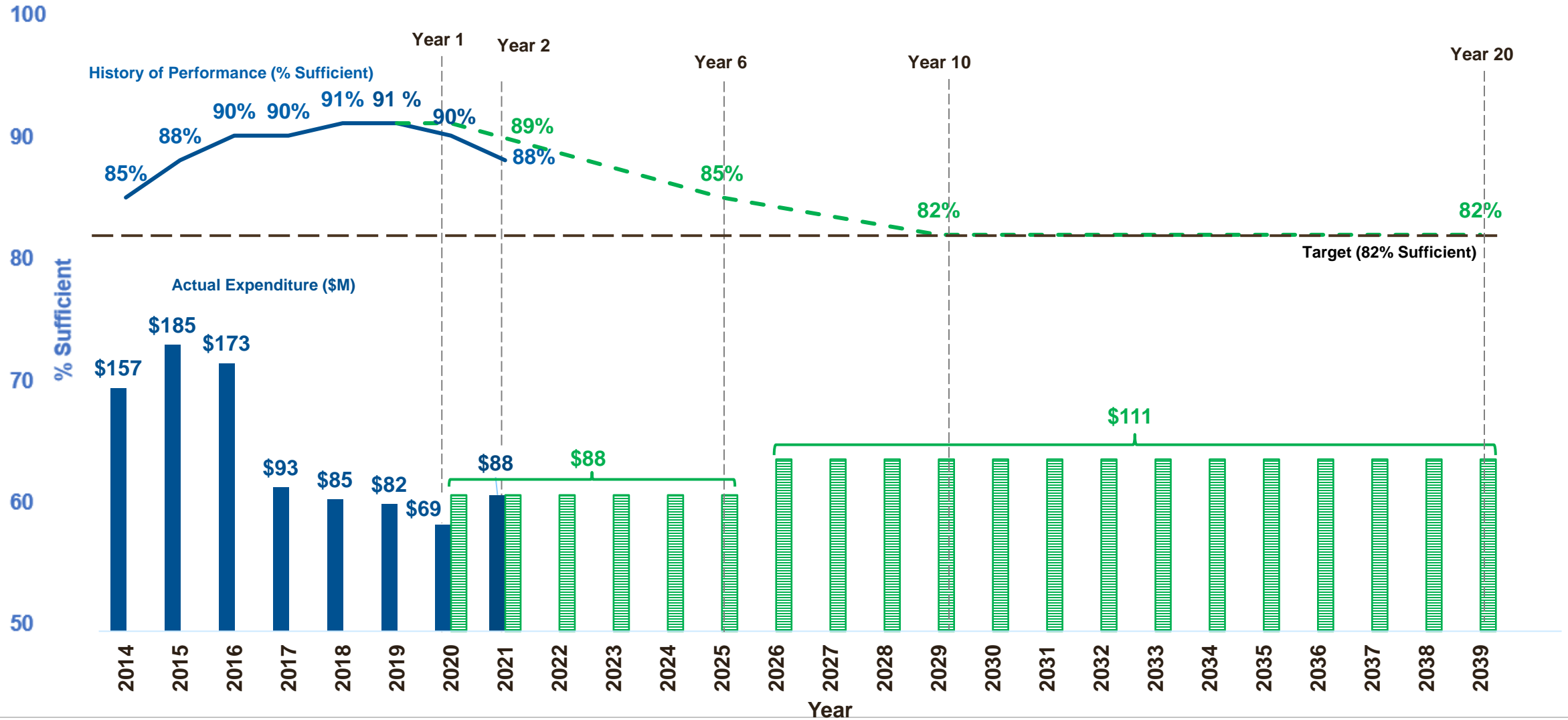
Pavements Performance Measures

Performance Measure	Current Policy (CTB Approved December 2019) % Sufficiency
Interstate	82% No Section CCI less than 35
Primary	82% for \geq AADT 3,500 75% for $<$ AADT 3,500
Secondary	82% for \geq AADT 3,500 60% for $<$ AADT 3,500

Interstate Network – 20 Year Outlook

(Predicted & Actual Performance)

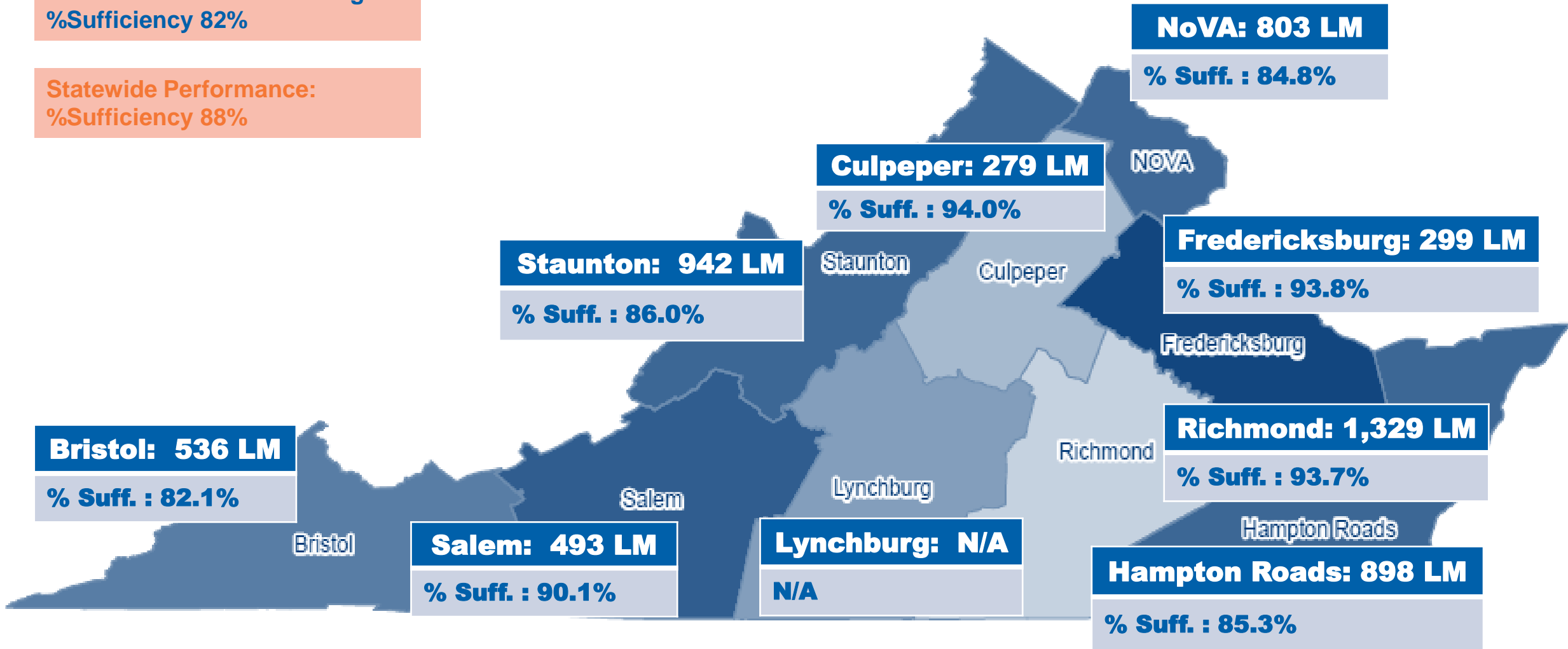
- Actual Expenditure
- Target: 82%
- Actual Performance



%Sufficiency: Interstate (2021)

Statewide Performance Target:
%Sufficiency 82%

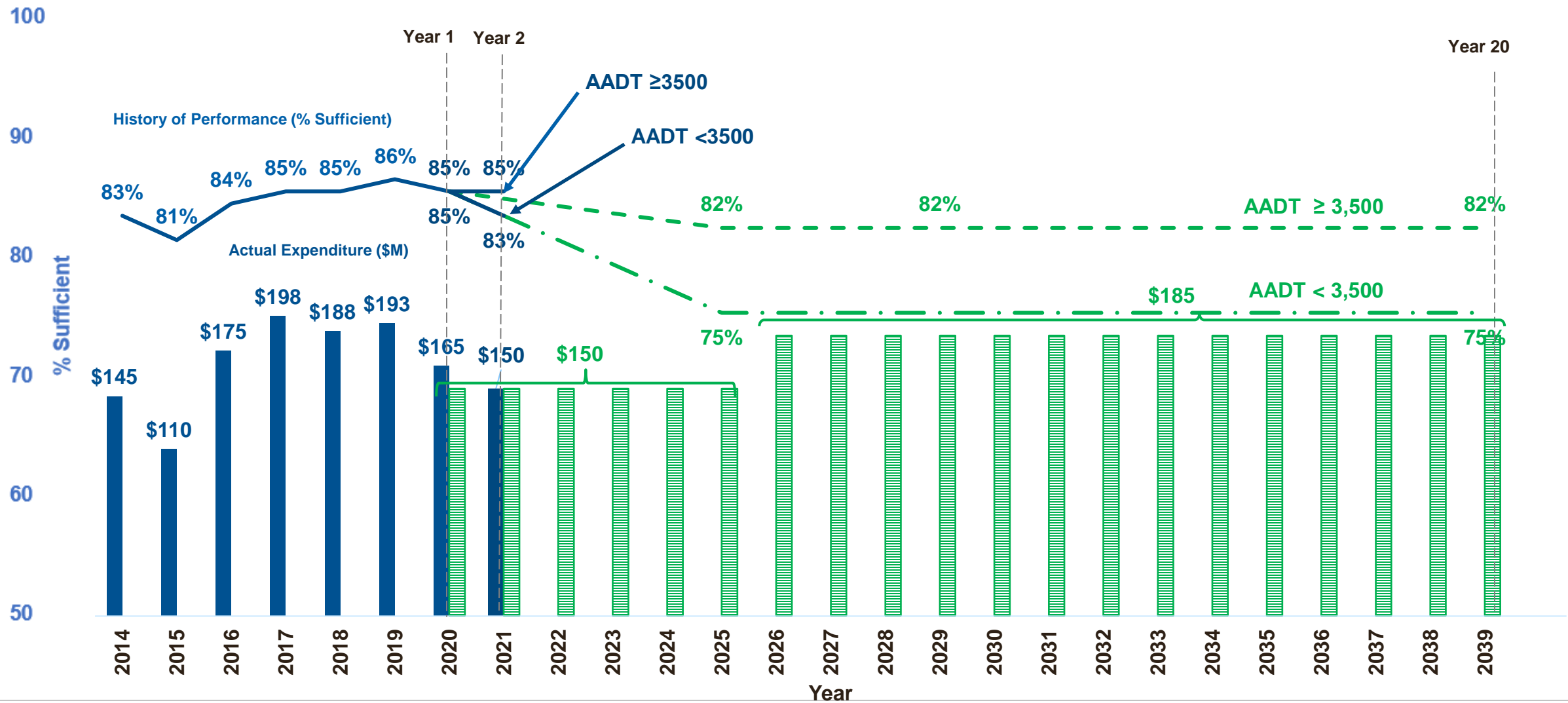
Statewide Performance:
%Sufficiency 88%



Primary Network – 20 Year Outlook

(Predicted & Actual Performance)

- Actual Expenditure
 - Target
 - Actual Performance
- AADT ≥ 3,500: 82%
AADT < 3,500: 75%



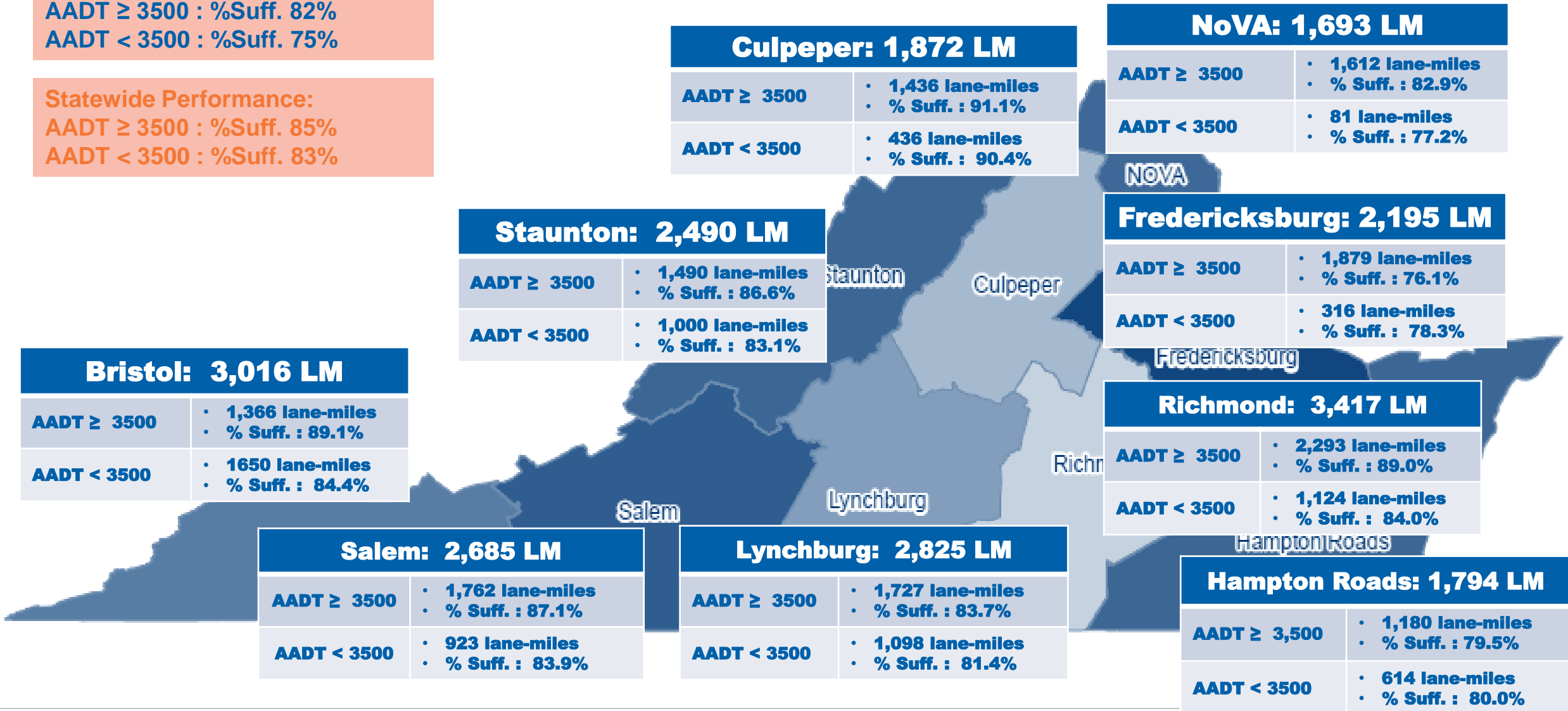
Traffic Volume and %Sufficiency: Primary (2021)

Statewide Performance Targets:

AA DT ≥ 3500 : %Suff. 82%
 AA DT < 3500 : %Suff. 75%

Statewide Performance:

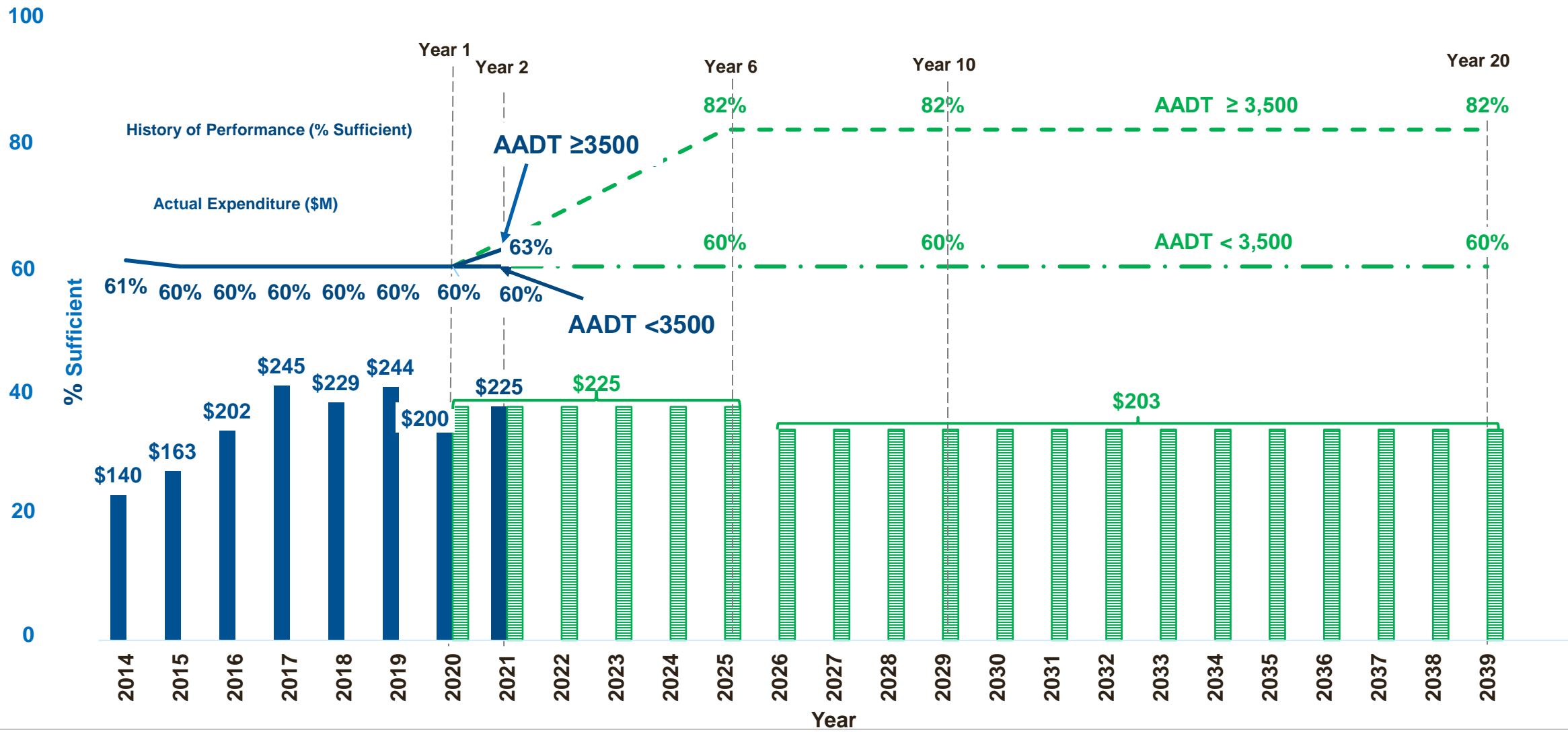
AA DT ≥ 3500 : %Suff. 85%
 AA DT < 3500 : %Suff. 83%



Secondary Network – 20 Year Outlook

(Predicted & Actual Performance)

- Actual Expenditure
- Target AADT ≥ 3,500: 82%
AADT < 3,500: 60%
- Actual Performance



Traffic Volume and %Sufficiency: Secondary (2021)

Statewide Performance Targets:
 AADT ≥ 3500 : %Suff. 82%
 AADT < 3500 : %Suff. 60%

Statewide Performance:
 AADT ≥ 3500 : %Suff. 63%
 AADT < 3500 : %Suff. 60%

Culpepper: 6,974 LM

AADT ≥ 3,500	<ul style="list-style-type: none"> • 267 lane-miles • % Suff. : 71.2%
AADT < 3500	<ul style="list-style-type: none"> • 6,707 lane-miles • % Suff. : 60.9%

NOVA: 10,998 LM

AADT ≥ 3,500	<ul style="list-style-type: none"> • 2,625 lane-miles • % Suff. : 56.7%
AADT < 3500	<ul style="list-style-type: none"> • 8,373 lane-miles • % Suff. : 44.6%

Staunton: 8,542 LM

AADT ≥ 3,500	<ul style="list-style-type: none"> • 235 lane-miles • % Suff. : 70.4%
AADT < 3500	<ul style="list-style-type: none"> • 8,307 lane-miles • % Suff. : 68.0%

Fredericksburg: 9,131 LM

AADT ≥ 3,500	<ul style="list-style-type: none"> • 425 lane-miles • % Suff. : 57.7%
AADT < 3500	<ul style="list-style-type: none"> • 8,706 lane-miles • % Suff. : 51.4%

Bristol: 10,107 LM

AADT ≥ 3,500	<ul style="list-style-type: none"> • 55 lane-miles • % Suff. : 63.7%
AADT < 3500	<ul style="list-style-type: none"> • 10,052 lane-miles • % Suff. : 53.8%

Richmond: 13,477 LM

AADT ≥ 3,500	<ul style="list-style-type: none"> • 887 lane-miles • % Suff. : 44.1%
AADT < 3500	<ul style="list-style-type: none"> • 12,590 lane-miles • % Suff. : 58.1%

Salem: 12,332 LM

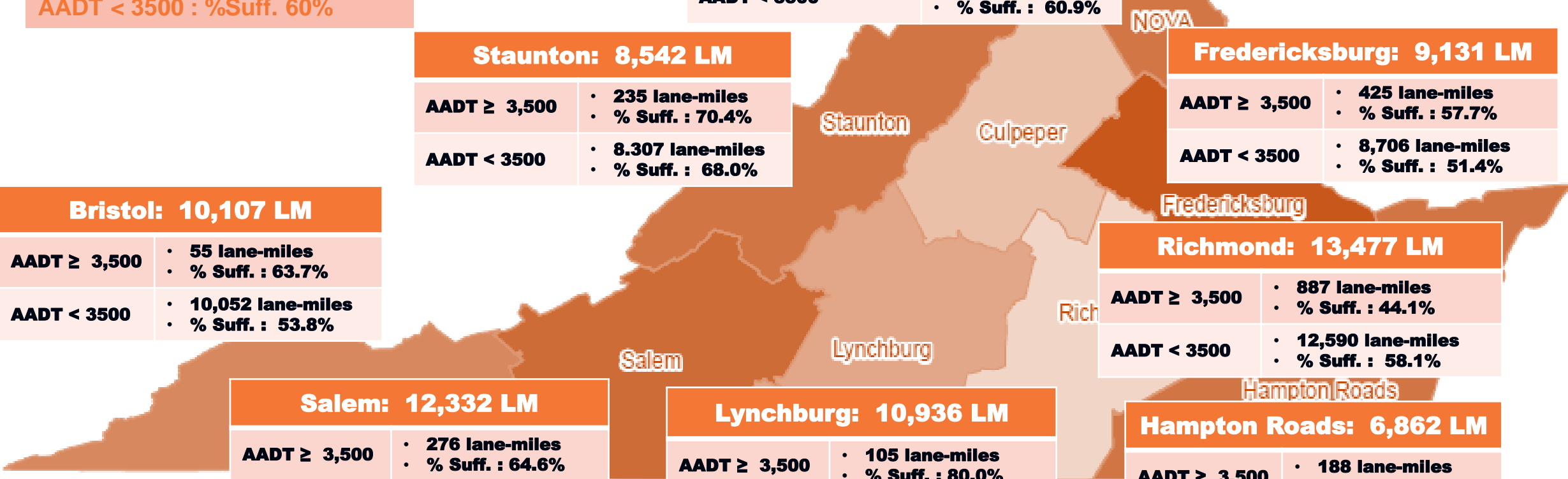
AADT ≥ 3,500	<ul style="list-style-type: none"> • 276 lane-miles • % Suff. : 64.6%
AADT < 3500	<ul style="list-style-type: none"> • 12,056 lane-miles • % Suff. : 56.5%

Lynchburg: 10,936 LM

AADT ≥ 3,500	<ul style="list-style-type: none"> • 105 lane-miles • % Suff. : 80.0%
AADT < 3500	<ul style="list-style-type: none"> • 10,831 lane-miles • % Suff. : 71.8%

Hampton Roads: 6,862 LM

AADT ≥ 3,500	<ul style="list-style-type: none"> • 188 lane-miles • % Suff. : 60.2%
AADT < 3500	<ul style="list-style-type: none"> • 6,674 lane-miles • % Suff. : 75.4%



Pavement - CY 2022 Budget by District (in Million \$)

District	Interstate	Primary			Secondary			District Total	District Total - Rounded to Millions
		AADT ≥ 3,500	AADT < 3,500	Total	AADT ≥ 3,500	AADT < 3,500	Total		
Bristol	\$11.4	\$13.2	\$4.1	\$17.3	\$0.5	\$28.2	\$28.7	\$57.4	\$57
Salem	\$11.5	\$11.9	\$3.7	\$15.6	\$1.9	\$28.9	\$30.8	\$57.9	\$58
Lynchburg	\$0.0	\$15.2	\$2.4	\$17.5	\$0.6	\$2.8	\$3.4	\$20.9	\$21
Richmond	\$15.7	\$11.5	\$3.2	\$14.7	\$6.8	\$24.6	\$31.4	\$61.8	\$62
Hampton Roads	\$15.0	\$19.4	\$2.6	\$22.0	\$1.5	\$5.2	\$6.7	\$43.6	\$44
Fredericksburg	\$4.4	\$16.5	\$1.0	\$17.5	\$3.3	\$22.4	\$25.6	\$47.5	\$47
Culpeper	\$2.1	\$4.8	\$0.3	\$5.1	\$1.3	\$8.2	\$9.4	\$16.5	\$17
Staunton	\$17.2	\$17.1	\$3.9	\$20.9	\$1.1	\$9.9	\$11.0	\$49.2	\$49
NOVA	\$10.8	\$19.1	\$0.4	\$19.5	\$28.1	\$49.9	\$78.0	\$108.2	\$108
Statewide	\$88	\$129	\$21	\$150	\$45	\$180	\$225	\$463	\$463

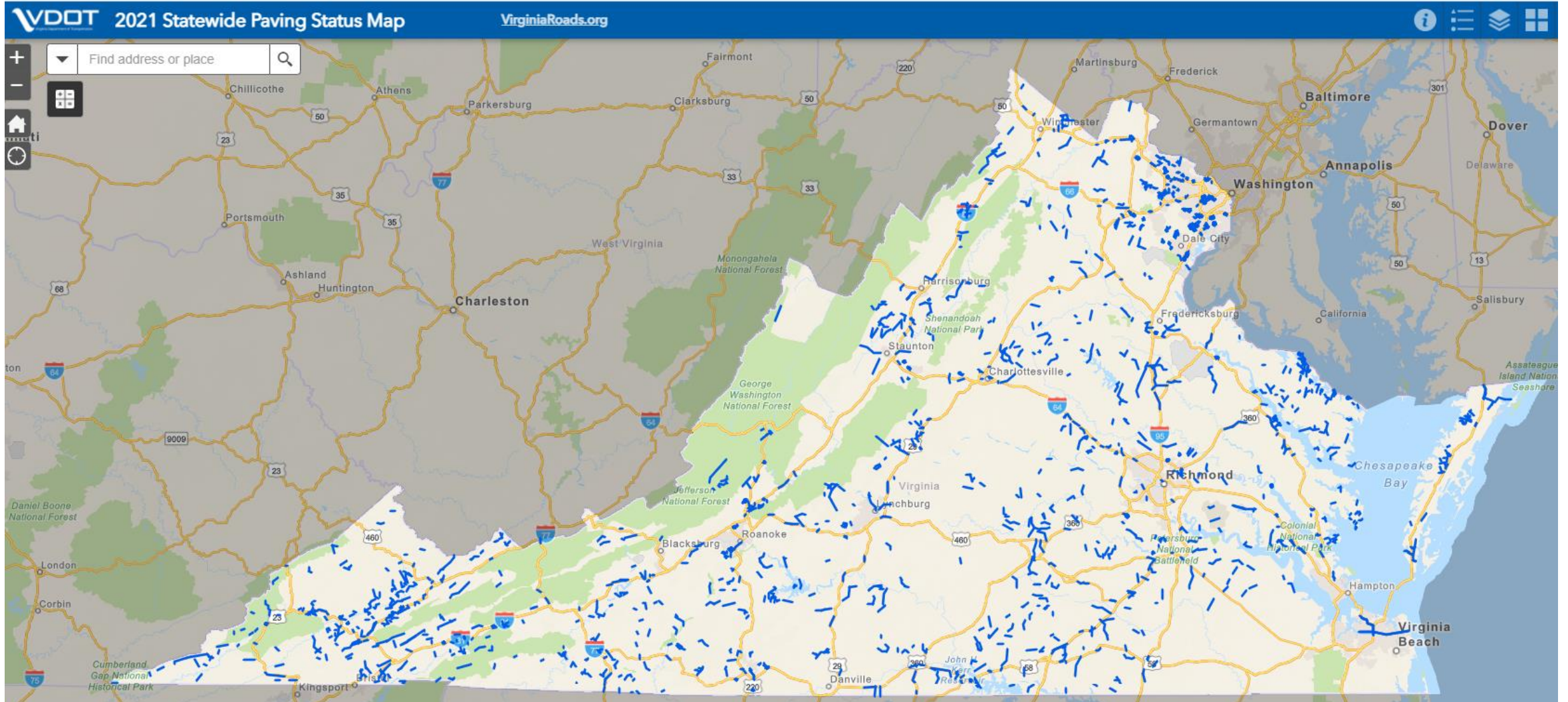
Paving Plans for CY 2022 – Plant Mix and Latex

District	Plant Mix			Latex		
	No. of Schedules	Lane Miles	Tons (Approximate)	No. of Schedules	Lane Miles	Tons (Approximate)
Bristol	10	363	297,000	5	759	57,000
Salem	23	359	398,000	3	152	15,000
Lynchburg	6	159	159,000	1	19	2,000
Richmond	11	300	333,000	2	98	9,000
Hampton Roads	9	294	216,000	2	103	8,000
Fredericksburg	11	254	437,000	1	46	4,000
Culpeper	5	149	100,000	1	21	2,000
Staunton	16	239	240,000	4	124	14,000
NOVA	21	863	820,000	4	121	14,000
Statewide	112	2,980	3,000,000	23	1,443	125,000

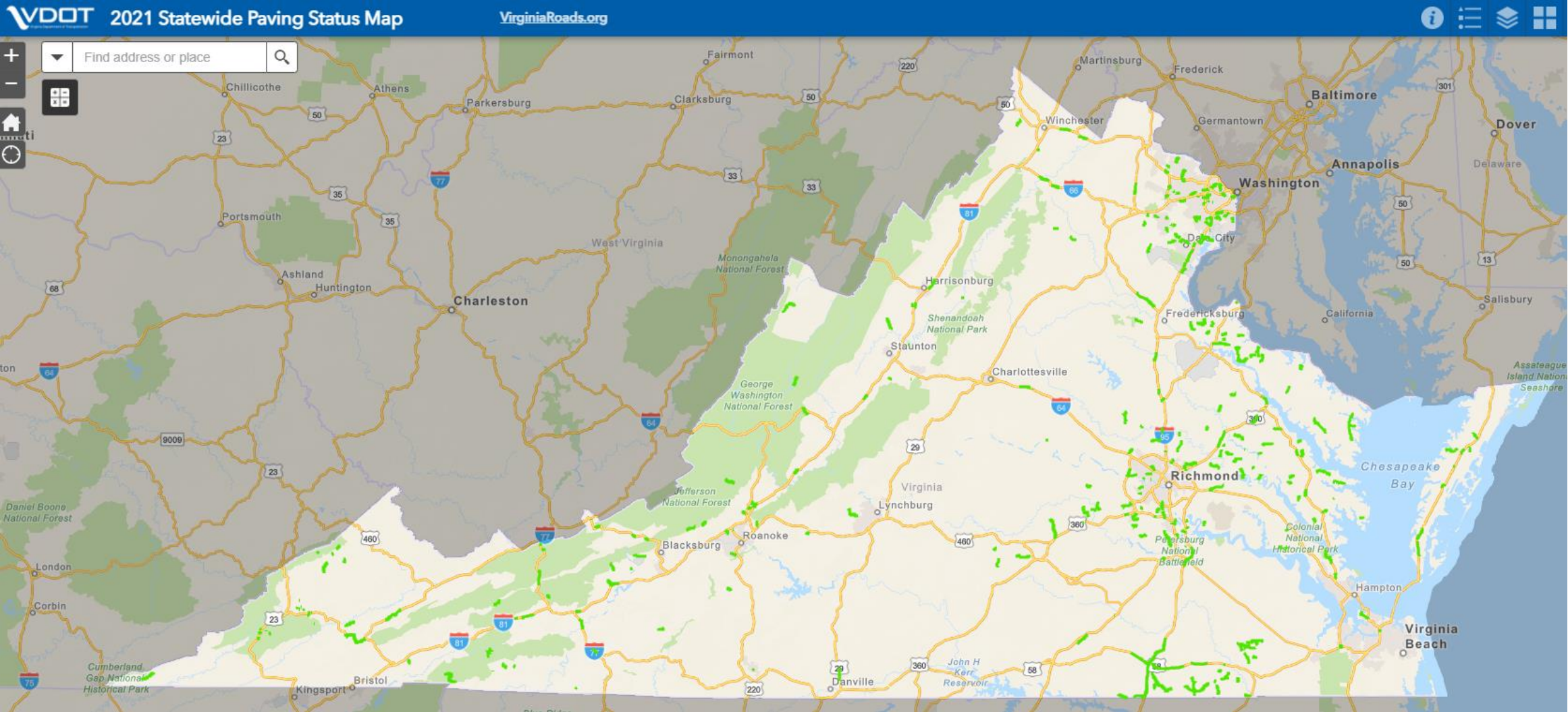
Paving Plans for CY 2022 – Slurry and Surface Treatment

District	Slurry			Surface Treatment		
	No. of Schedules	Lane Miles	Square Yards (Approximate)	No. of Schedules	Lane Miles	Square Yards (Approximate)
Bristol	-	-	-	-	-	-
Salem	3	142	965,000	6	449	2,449,000
Lynchburg	-	-	-	1	195	1,056,000
Richmond	2	100	1,339,000	4	557	3,304,000
Hampton Roads	1	53	320,000	1	100	486,000
Fredericksburg	3	129	1,614,000	3	470	2,634,000
Culpeper	-	-	-	1	196	1,113,000
Staunton	1	132	771,000	2	197	1,215,000
NOVA	2	79	687,000	-	-	-
Statewide	12	635	5,696,000	18	2,164	12,257,000

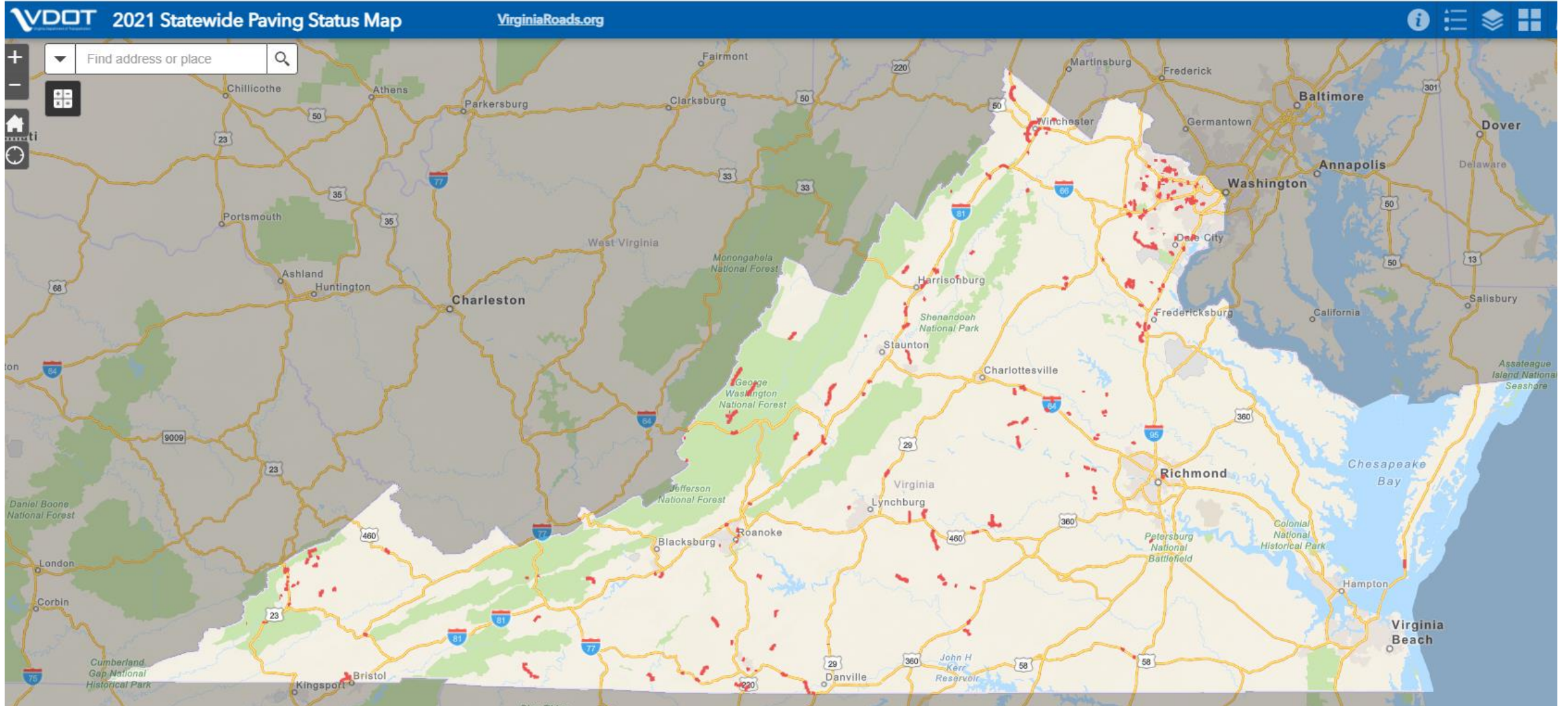
CY 2021 Paving Locations (Completed) – As of 10/06/21



CY 2021 Paving Locations (In-Progress) - As of 10/06/21



CY 2021 Paving Locations (Scheduled)- As of 10/06/21



Paving Work CY 2021 – Lane Miles Completed, In-Progress, and Scheduled (As of 10/06/21)

District	Lane Miles Completed	Lane Miles In-Progress	Lane Miles Scheduled
Bristol	904	185	118
Salem	727	116	95
Lynchburg	384	25	119
Richmond	895	256	8
Hampton Roads	484	356	10
Fredericksburg	584	332	72
Culpeper	245	17	72
Staunton	361	102	258
NOVA	510	323	296
Statewide	5,094	1,712	1,048

QUESTIONS ?

VAA UPDATE CHIEF OF MAINTENANCE & OPERATIONS

 Kevin Gregg

October 13, 2021